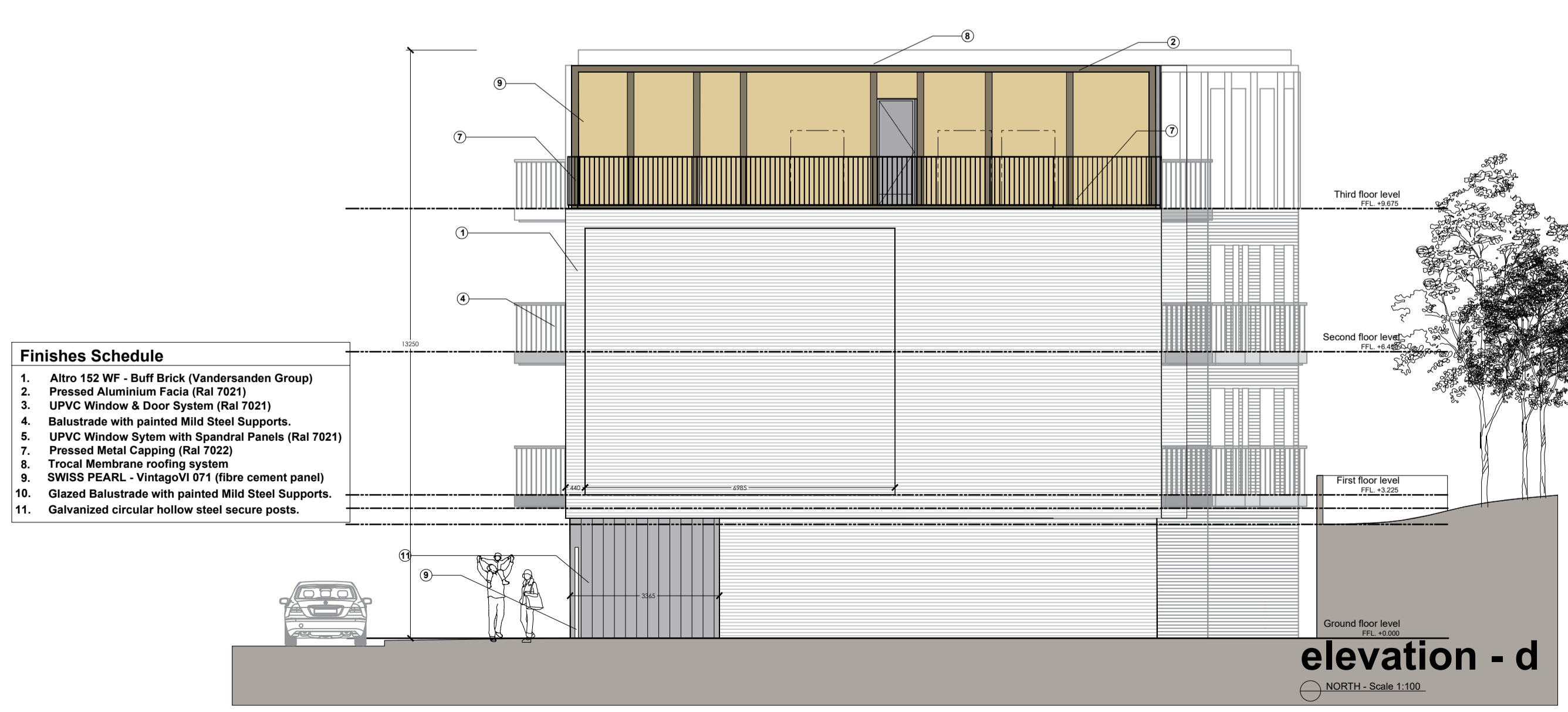


Finishes Schedule

1. Altro 152 WF - Buff Brick (Vandersanden Group)
2. Pressed Aluminum Fascia (Ral 7022 Olive Brown)
3. UPVC Window & Door System (Ral 7021)
4. Balustrade with painted Mild Steel Supports.
5. UPVC Window System with Spandrel Panels (Ral 7021)
6. Pressed Metal Capping (Ral 7022)
7. Trocal Membrane roofing system
8. SWISS PEARL - VintagoV1 071 (fibre cement panel)
9. Glazed Balustrade with painted Mild Steel Supports.
10. Galvanized circular hollow steel secure posts.



Material finishes image



Finishes Schedule

1. Altro 152 WF - Buff Brick (Vandersanden Group)
2. Pressed Aluminum Fascia (Ral 7022 Olive Brown)
3. UPVC Window & Door System (Ral 7021)
4. Balustrade with painted Mild Steel Supports.
5. UPVC Window System with Spandrel Panels (Ral 7021)
6. Pressed Metal Capping (Ral 7022)
7. Trocal Membrane roofing system
8. SWISS PEARL - VintagoV1 071 (fibre cement panel)
9. Glazed Balustrade with painted Mild Steel Supports.
10. Galvanized circular hollow steel secure posts.

NOTES

CHECK ALL DIMENSIONS ON SITE
DO NOT SCALE FROM THE DRAWING.
BEFORE ANY CONSTRUCTION AND/OR MATERIALS ARE USED, HAVE OUR ARCHITECTS
THE CHANGING OF PROJECT AND/OR MATERIALS, SEE THE PANEL FOR DATE OF CREATION.
THE CHANGING OF PROJECT AND/OR MATERIALS, SEE THE PANEL FOR DATE OF CREATION.
ANY WAY WITHOUT THE EXPRESS WRITTEN CONSENT OF MRL VAN DIJK ARCHITECTS.
MRL VAN DIJK ARCHITECTS CAN ACCEPT NO LIABILITY FOR THE ACCURACY OF ANY
INFORMATION PROVIDED ON THE DRAWING WHICH HAS BEEN SUPPLIED BY THIRD PARTY SUPPLIERS OR CONSULTANTS.

PLANNING
THIS DRAWING HAS BEEN PRODUCED FOR CLIENT NAME FOR THE PROJECT NAME AND IS
ISSUED AS PART OF A PLANNING APPLICATION AND IS NOT INTENDED FOR USE BY ANY OTHER
PARTIES OR PURPOSES.

REV	DATE	DETAILS OF ISSUE	INITIALS
B	11-2019	Amended material notes to elevations	df
A	10-2019	Amended material change to elevations	df

STATUS OF DRAWING

NO	DESCRIPTION	DATE	BY
500	SURVEY/EXISTING (S)		
100	SKETCH DESIGN (SK)		
200	PLANNING (PL)		
300	WORKING DRAWING (WD)		
400	TENDER (T)		
500	CONSTRUCTION (C)		
600	AS BUILT (AB)		
	PRELIMINARY (P)		



CLIENT:
RESPOND Housing Association

PROJECT:
Proposed Apartment Development at Kilbride
Lodge site located at junction of Killarney Road
& Ballywaltrim Road, Bray, County Wicklow.

TITLE:
PROPOSED ELEVATIONS A,B,C & D

SCALE	DATE	DRAWN	CHECKED	REVISION
1:100@A1	27.09.2019	Damian Foley	Cathal Maguire	B